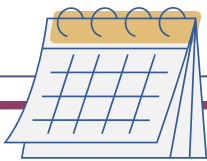




# St. Matthew

LUTHERAN CHURCH of HANOVER



## THIS WEEK

### Sunday

Backpack Blessing .....  
Drive-In Worship (Parking Lot) ..... 8:30 a.m.  
Worship with Holy Communion (Nave) ..... 10:30 a.m.

### Monday

GriefShare Group (Upper Room) ..... 6:30-8:00 p.m.

### Tuesday

Cub Scouts (Gym) ..... 6:00-7:30 p.m.  
Council Meeting (Upper Room) ..... 7:00-9:00 p.m.

### Wednesday

### Thursday

Adult Music Ministry Mixer (Fellowship Hall) . 6:00-7:00 p.m.

### Friday

Church Office Closes at Noon .....

### Saturday

Worship Service (Fellowship Hall) ..... 5:00 p.m.

### Sunday

Drive-In Worship (Parking Lot) ..... 8:30 a.m.  
Music Camp Rehearsal (Fellowship Hall) ..... 9:45-10:15 a.m.  
Worship with Holy Communion (Nave) ..... 10:30 a.m.



### Blessing of the Backpacks

We want to send students, teachers, staff, and school volunteers back to school with our love and prayers. During both services **this Sunday, August 24**, we'll offer a moment of encouragement and support for learners of all ages. Bring your backpack/briefcase as we ask God's blessing on this year!  
Contact Pastor Alex ([pastoralex@stmattlutheran.org](mailto:pastoralex@stmattlutheran.org)) with any questions.



### Adult Music Ministry Mixer

Join us for food, fellowship, singing and ringing **this Thursday, August 28 at 6:00 p.m.** at our Adult Music Ministry Mixer in Fellowship Hall! This is for anyone involved in the Adult Music Ministry or for anyone who would like to be a part of it. Contact Deb Smith ([dsmith@stmattlutheran.org](mailto:dsmith@stmattlutheran.org)) with any questions.



### Summer Food Collections

The Social Ministry Committee will be collecting food items on the last Sunday of each month during the summer at the drive-in worship service. Items collected in June and July were donated to God's Meal Barrel. Items collected on **August 31** will be donated to Ruth's Harvest. Items we are collecting:

- Individual/Single Serving Packs of Fruit, Mac-N-Cheese, Cereal Cups

We will have bins available for your items at the Drive in Service.



### Blood Drive - Thursday, September 4, 11:00 a.m.-6:00 p.m.

Come donate during the September Blood Drive held in our Fellowship Hall! Walk-ins are welcome but you can schedule your donation by going to [717GiveBlood.org](http://717GiveBlood.org) or calling 1-800-771-0059. A form of ID is required to donate. Everyone will receive certificates for Papa John's and Bruster's Ice Cream.

### God's Work, Our Hands

#### Sunday September 7, 9:30-10:30 a.m. - Upper Room

Once again we will be making Care Packages for our Emergency Services (Ex: Fire Stations, Police Stations, Emergency Room, Lutheran Home). If you have somewhere you think would appreciate a package, please let us know. What we will need:

- Donations/Snacks to add to the boxes
- Boxes
- Volunteers to help assemble the boxes
- Volunteers to help deliver the boxes

If you would like additional information, please reach out to Amy Beck, [abeck1976@comcast.net](mailto:abeck1976@comcast.net).



### Heart-Felt Card (Creating) Group

#### Wednesday, September 10, 1:30 p.m. - Upper Room

We'd love to have you join us in making gorgeous Christmas cards for our Christmas Cheer Bags. Last year we delivered 265 Cheer bags. Each contained a gorgeous, heart-warming card! All materials will be supplied. Training is available as needed. Please respond so that we have supplies for you. Interested or want more Information? Call the church office (717) 637-7101, or email [nicksong@comcast.net](mailto:nicksong@comcast.net).

### Attention Youth

We're not ready to say good-bye to summer. That's why you, (6<sup>th</sup>-12<sup>th</sup> graders) are invited to a Pool Party on Sunday, **September 7** at Missy Smith's home in New Oxford. Come anytime between 5:00 and 8:00 p.m. to swim, eat and hangout. Contact Tim Peck at [youth@stmattlutheran.org](mailto:youth@stmattlutheran.org) or the church office 717-637-7101 ext. 230 for more information and to sign-up.



### Attention Middle School Parents

In the midst of a busy season, our 6<sup>th</sup>-8<sup>th</sup> graders have an opportunity to spend a week-end at Camp Nawakwa from **September 26-28** for ALIVE. Making new friends, learning more about God and simply having fun is just what our kids need. **Registration Deadline is on September 3.** Contact Tim Peck at [youth@stmattlutheran.org](mailto:youth@stmattlutheran.org) or the church office 717-637-7101 ext. 230 to register or if you have any questions.



Scan Me to Sign-Up for  
Confirmation & Family Night

### Confirmation 2025-2026 begins with Family Night on Sunday, September 14 at 6:00 p.m.

The whole family is invited to join the students for food, fun and information related to how our kids faith will grow through Confirmation. Whether your student is in 6<sup>th</sup>, 7<sup>th</sup> or 8<sup>th</sup> grade, this gathering is a must for a great beginning to the year. Use the QR code above to sign-up. Contact Pastor Alex at [pastoralex@stmattlutheran.org](mailto:pastoralex@stmattlutheran.org) or Youth Ministry Director, Tim Peck, at [youth@stmattlutheran.org](mailto:youth@stmattlutheran.org) with questions.



Scan Me to Sign-Up  
to Serve

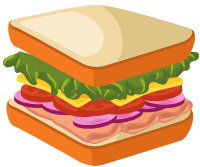


### Serve in Worship!

Each week, our worship services are shaped by the gifts of many. From reading scripture to offering a warm welcome at the door, each role matters.

We're refreshing how we schedule volunteers, starting with four key roles: **Greeter, Assisting Minister, Lector, and Communion Assistant.** You'll see other worship roles listed on the sign-up form. You can still sign up for them, and we will contact you about those as we begin scheduling them.

Worship comes alive when we share it together. If you'd like to serve this fall, sign up by **October 1** to be part of the November and December schedule for those first four roles. The rest will follow soon—we'll keep you in the loop!



### Sandwiches on Saturday

**Saturday, September 20, 10:30 a.m.-12:30 p.m.**

We will meet at St. Matthew, assemble bagged lunches, and head out in different directions to meet our neighbors. All are welcome to join us. We are looking for donations of granola bars, small bags of chips, and brown paper bags.

Any questions, please contact Amy Beck,  
[abeck1976@comcast.net](mailto:abeck1976@comcast.net).

### Women/ELCA Bible Study

All women are invited to attend Tuesday, **September 2 at 2:00 p.m.** in the Upper Room. Pastor Kathy will be leading the Bible Study: *Flourishing in Relationships*. For additional information call the church office at 717-637-7101.



### CAMP HEBRON - FALL RETREAT

Sponsored By: The Lower Susquehanna Synodical Women's Organization

**Friday, Saturday & Sunday, October 24, 25, 26**

The retreat theme is: "In the Potter's Hand." Jeremiah 18:1-2. Led by Lu Ann Wise, a retired health and physical education teacher. There will be faith renewal in worship, laughter and tears, getting reacquainted with old friends and making new friends, refreshing walks in the outdoors or sitting quietly in meditation. Offering motel-type accommodations including linens, private bath and 5 delicious meals. There will be carpooling from the church lot for those interested. There is also an opportunity for Saturday only registration. See registration form for more info. Forms can be picked up in the church office or on the Hospitality Desk. Registrations must be postmarked by Monday, September 8. For more information call the church office at 717-637-7101.